

SYNERGY SINGLE BASKET 2 DIVER LAUNCH & RECOVERY SYSTEM SY-ATLAS-2D-D023-LARS

LAUNCH AND RECOVERY SYSTEM (COMMONLY KNOWN AS LARS) COMPLETE WITH 'A' FRAME AND STAINLESS STEEL OR GALVANIZED CAGE (BASKET) & HYDRAULIC WINCHES.

TECHNICAL PROPOSAL

THE DESIGN PARAMETERS OF THE SYNERGY LAUNCH & RECOVERY SYSTEM ENABLE THE FABRICATION AND INSTALLATION OF EXTREMELY PORTABLE COMPACT LARS SYSTEMS. THIS ENABLES MINIMUM UTILIZATION OF SPACE ON BOARD DIVING VESSELS AND BARGES, AS SPACE IS A PREMIUM ON ALL VESSELS. THE FOOT PRINT OF THE LARS IS DESIGNED IN SUCH A WAY THAT A COMPLETE UNIT WOULD EASILY FIT INTO A 20FT STANDARD CONTAINER, THUS REDUCING SHIPPING COSTS AND PROVIDING EASE OF TRANSPORTATION. A LARS SYSTEM TYPICALLY CONSISTS OF AN 'A' FRAME COMPLETE WITH BASE, 2 X HYDRAULIC WINCHES (MAIN CAGE AND GUIDE WEIGHT AND DIVER BASKET).



THE LARS SYSTEM IS BUILT AS PER THE GUIDELINES OF IMCA AS BELOW

IMCA D023	DESIGN for Surface Oriented (Air) Diving Systems
IMCA D018	Code of Practice for The Initial and Periodic Examination, Testing and Certification of Diving Plant and Equipment



SYNERGY SINGLE BASKET 2 DIVER LAUNCH & RECOVERY SYSTEM SY-ATLAS-2D-D023-LARS

IMCA D018 –Code of Practice for The Initial and Periodic Examination, Testing and Certification of Diving Plant and Equipment



**Code of Practice for
The Initial and Periodic
Examination, Testing and
Certification of Diving
Plant and Equipment**

IMCA D023 –DESIGN for Surface Oriented (Air) Diving Systems



**Diving Equipment Systems
Inspection Guidance Note**

**DESIGN for Surface Oriented
(Air) Diving Systems**

SYNERGY SINGLE BASKET 2 DIVER LAUNCH & RECOVERY SYSTEM SY-ATLAS-2D-D023-LARS

Description	Length	Width	Height	Weight
LARS Assembly (Transport Mode)	3140mm	2000mm	2020mm	4 ton (aprox.)
LARS Assembly (On Board Ship)	3140mm	2000mm	3300mm	4 ton (aprox.)

TECHNICAL SPECIFICATION

Depth Capability	50 Meters for Air Diving
Design Guidelines	IMCA D023 /Ref. DNVGL for lifting appliances
Testing Standards	IMCA D018
Certification	IMCA D023 & IMCA D018
Testing Witness	DNV GL
Basket Material	C S Galvanized / Stainless steel
Basket/Cage Cylinder	1x 50 Liter @ 200 Bar
Main Lift Wire	13mm dia. Nonrotating (90M installed)
Clump Weight Wire	13mm dia. Nonrotating(160M installed)
Transportation	Fits into a standard 20ft shipping container in resting position

The A frame with Skid

Keeping in mind the restrictions on space and the weight of the LARS system, the base has been designed to Ensure minimum utilization with maximum effect on the diving vessel or barge. The system consists of the main A frame (Rated to 1. ton). The paint is double epoxy heavy duty marine grade paint.

Main Winch for the Basket / Cage

The main winch is manufactured by Bell Fluid technics and is certified for Man riding purposes. It is hydraulic 1000 kg SWL and tested to 1.25 tons. as per IMCA guidelines. The winch is operator controlled to 34 mtr per min. The winch is powered by heavy duty Radial piston motor coupled to the drum via a planetary gear box. There are three independent braking systems on the winch, one internal disc brake second hydraulic over center valve and the third Manuel band brake. The length of the 13mm wire installed on the winch is 90 mtrs (Drum capacity 150 M)

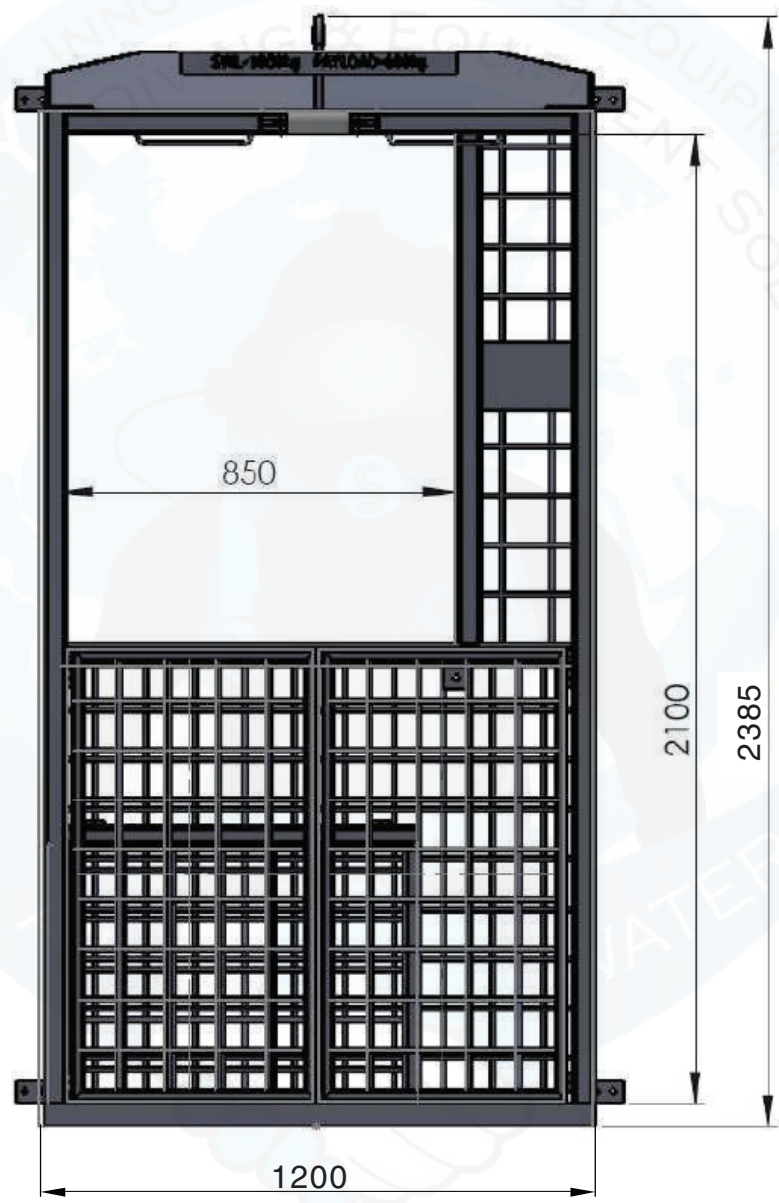
Guide Weight Winch

The main winch is manufactured by Bell Fluid technics and is certified for Man riding purposes. It is set hydraulically for 750 kg on single fall) and tested to 1.25 tons. as per IMCA guidelines. The winch is operator controlled to 18 mtr per min. The winch is powered by heavy duty Radial piston motor coupled to a planetary. There are three independent brakes on the system, one internal disc brake second hydraulic over center valve and the third Manuel band brake. The length of the 13mm wire on the winch is 150 mtrs. The winch wire is double reeved through the Guide weight to the A frame to be used for SWL of 1 ton and the system tested for 1.5 ton.

SYNERGY SINGLE BASKET 2 DIVER LAUNCH & RECOVERY SYSTEM SY-ATLAS-2D-D023-LARS

Steel Galvanized / Stainless Steel Basket

The Two Diver Basket (1200 L x 1200 B mm outer dimensions) provided with the LARS is thus ensuring long life and rust proof service. Single 50 ltr x 200 bar breathing air cylinder, along with a panel for mounting the 1st stage regulator, manifold etc. for the cylinder are provided with the basket. Appropriate hand holds are provided at regular intervals. The design of the basket has taken into account the height of a fully dressed diver with a diving helmet, mounted camera / light etc. A groove with Teflon roller (which can be opened and closed) to tread the diving umbilicals to the basket is provided on the frame of the basket. The basket is provided with a zinc anode.



Clump Weight

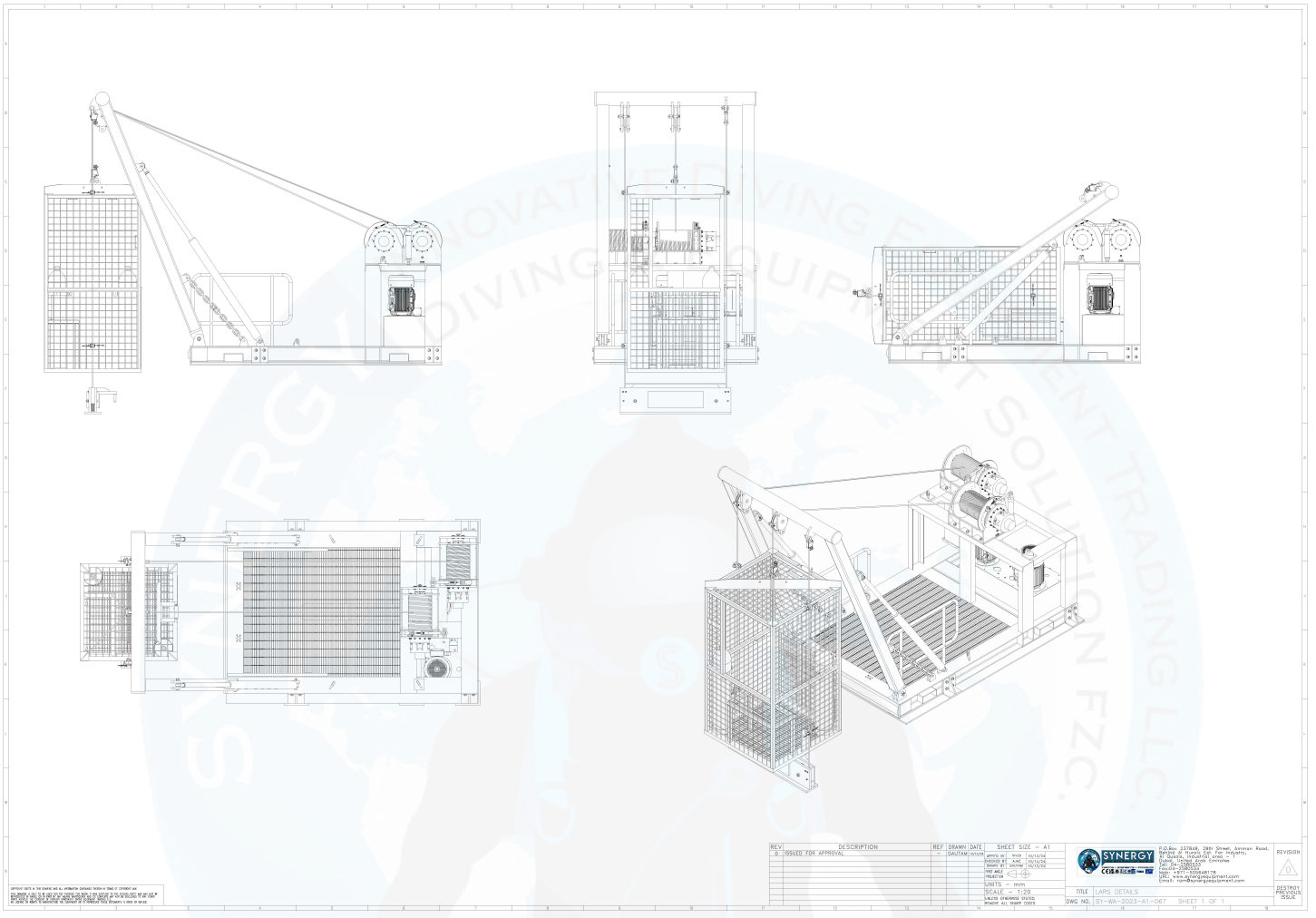
The clump weight provided is 300 kg in weight. It is designed to reduce drag when in difficult current conditions underwater. The clump weight is provided with a zinc anode installed also.

The Control station

The Control station has the following controls:

- Cage wire winch raise and lower
- Guide wire winch raise and lower
- A-Frame luff in and out

SYNERGY SINGLE BASKET 2 DIVER LAUNCH & RECOVERY SYSTEM SY-ATLAS-2D-D023-LARS



FREQUENTLY ASKED QUESTIONS

Main Winch to be capable to lift Main Basket with Gas Bottle and 2 Divers:- YES

SWL MAIN BASKET SYSTEM 800 Kg (MAX. GROSS MASS)

- SELF WEIGHT OF THE BASKET < 350 Kg. + Gas Bottles x 1 = 75 Kg
- TOTAL BASKET WEIGHT 800 - 900Kg
- PAY LOAD 2 X 200 (Kg/Diver) = 400Kg

SWL OF THE GUIDE / CLUMP WEIGHT SYSTEM 1000 Kg. IN TWO FALL SYSTEM (DOUBLE RIVED WIRE ROPE)

- SELF WEIGHT OF GUIDE WEIGHT 300 Kg
- SWL (Max gross weight) OF BASKET 1000 Kg.
- TOTAL 1500 Kg. SWL OF GUIDE WEIGHT SYSTEM and A FRAME
- Design temperature -30 C
- Operating sea state 2 Mtrs. Significant wave height

SYNERGY SINGLE BASKET 2 DIVER LAUNCH & RECOVERY SYSTEM SY-ATLAS-2D-D023-LARS

Certifications provided with the System
As per IMCA DO18 and IMCA DO23
Man riding winches certification from manufacturer, Test certified by DNV.
Lifting Load test certification and wire rope certificate.
NDT certification (MPI/DP test certificates)
DNV OR BV witness test for entire Launch and Recovery System.
Lifting slings provided with the LARS with certification.

NOTE : DIMENSIONS AND SPECIFICATIONS MAY CHANGE/ VARY WITHOUT NOTICE.



SYNERGY SINGLE BASKET 2 DIVER LAUNCH & RECOVERY SYSTEM SY-ATLAS-2D-D023-LARS

POWER PACK

TWIN POWER PACK

THE POWER PACK CONSISTS OF THE FOLLOWING:
PRIMARY MOTOR & PUMP RATED AS FOLLOWS:

- 11KW /15 HP POWER 415 V/50HZ. (POWER AS DETERMINED). OR 12.5 KW 440V 60HZ.
- 39 LTR/MIN AT 150 BAR,

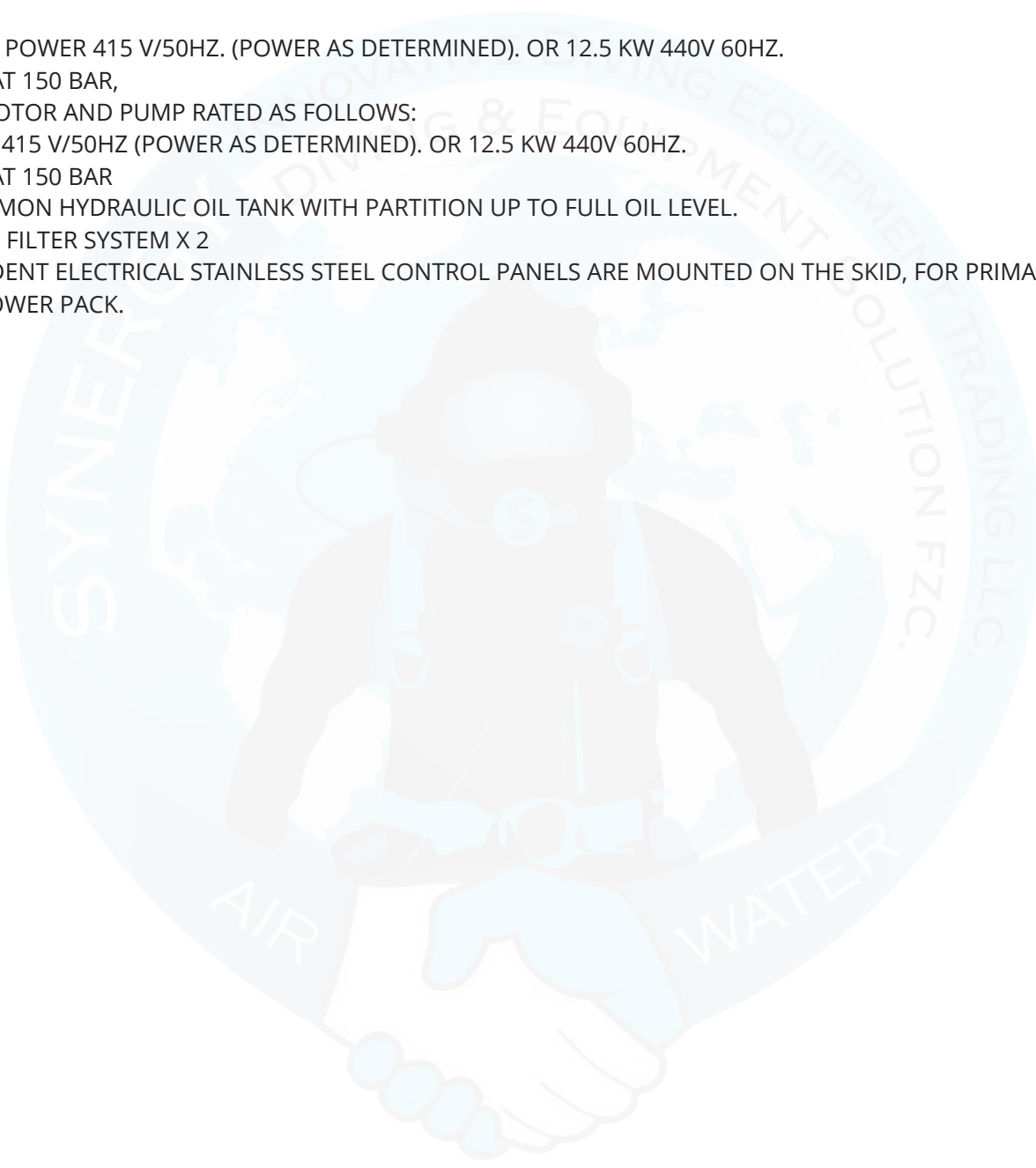
SECONDARY MOTOR AND PUMP RATED AS FOLLOWS:

- 11KW/15 HP, 415 V/50HZ (POWER AS DETERMINED). OR 12.5 KW 440V 60HZ.
- 39 LTR/MIN AT 150 BAR

300 LITRE COMMON HYDRAULIC OIL TANK WITH PARTITION UP TO FULL OIL LEVEL.

HYDRAULIC OIL FILTER SYSTEM X 2

TWO INDEPENDENT ELECTRICAL STAINLESS STEEL CONTROL PANELS ARE MOUNTED ON THE SKID, FOR PRIMARY AND SECONDARY POWER PACK.



CERTIFICATES PROVIDED WITH EACH LARS

A frame	DNV GL load test
Winch	Man riding certificate from manufacturer and DNV
Wire rope	Manufacturer mill certificate
Lars	DNV GL function test certificate
Lifting Slings	DNV GL
Basket	DNV GL load test certificate
Imca	D018 / D023
Class	Bureau Veritas function test witness for entire system
Fmea	As built by Synergy
Fmea stamped by class	As built by Synergy and reviewed by Class (optional)
Warranty	One year Synergy manufacturing warranty



SYNERGY SINGLE BASKET 2 DIVER LAUNCH & RECOVERY SYSTEM SY-ATLAS-2D-D023-LARS

Manufacturer	Synergy Viking
Wire rope	Usha Martin
International	IMCA D018 / D023
Class witness lars	DNV GL (for complete unit)
Lifting	DNV GL
NDT	MPI/DP

ORDERING INFORMATION

SR	PART NUMBER	DESCRIPTION
1	SY-ATLAS-2DD023-LARS	SYNERGY SINGLE BASKET 2 DIVER LAUNCH & RECOVERY SYSTEM



SYNERGY SINGLE BASKET 2 DIVER LAUNCH & RECOVERY SYSTEM SY-ATLAS-2D-D023-LARS

Contact us



Synergy Innovative Diving Equipment Trading LLC

P.O. Box: 237849, Warehouse No.242, 29th street,
Amman Road, Behind Al Huraiz Est, For Industry,
Al Qusais, Industrial Area - 1, Dubai - U.A.E

+9714 2580533 / +971 50 564 8178
ram@synergyequipment.com
www.synergyequipment.com



iSubC Diving Equipment Ltd

Units 10 Holly Close, Whitehills Business Park
Westby With Plumpton, Blackpool, FY4 5QP,
United Kingdom

+44 1253 767 788 / + 44 7951 966 260
info@isubc.com
www.isubc.com



Synergy Viking Offshore Engineering

Rabale Ttc Industrial Area Road no 20,
Near Narayan dairy, Navi Mumbai,
Thane - 400701, Maharashtra, India

+91 98218 90129
ram@synergyequipment.com
www.synergyequipment.com



Synergy Group Azerbaijan

Gasan Aliyev, 14A
Baku
Azerbaijan

+99470 330 35 20
infoazerbajian@synergyequipment.com
www.synergyazerbajian.com

