



SYNERGY

INNOVATIVE DIVING EQUIPMENT TRADING LLC

INSPIRING • ENGINEERING • INNOVATION

UAE • UK • INDIA • AZERBAIJAN



The **CO23** Cut-Off Saw is a hydraulic powered saw for dimensional cutting of metal, concrete, rock, masonry and coral. It has a high torque gear motor and 10" blade capacity for abrasive and diamond wheels with a 1" arbor. The **CO23** is designed for underwater operation and is painted hi-visibility yellow.

FEATURES

- Integral Stanley Hyrevz gear motor produces high torque
- Direct drive motor
- Stainless Steel spool and fasteners
- Adjustable shoe for precise cuts
- Interlocking safety trigger
- Cast aluminum handle and guard for durability
- Counter-clockwise rotation
- Wide flow range

SPECIFICATIONS

Capacity	10" / 25.4 cm wheel
Performance	3275 rpm @ 15 gpm
Arbor	1" / 2½ cm
Circuit Type	Open Center
Flow Range	10-15 gpm / 38-57 lpm
Optimum Flow	15 gpm / 57 lpm
Working Pressure	1500-2000 psi / 105-140 bar
Full Relief Setting	2250 psi / 155 bar
Weight	23 lbs / 10.4 kg
Length	19½" / 49½ cm
Width	11" / 28 cm
Hydraulic Ports	-8 SAE O-ring
Connection Size and Type	½" Male Pipe Hose End
Couplers	No (See Accessories)
Hose Whips	Yes





UNDERWATER HYDRAULIC CUT-OFFSAW SY - CO23341

PART NUMBER

CO23341 Cut-Off Saw, Underwater, 10" capacity with 1" arbor, less couplers

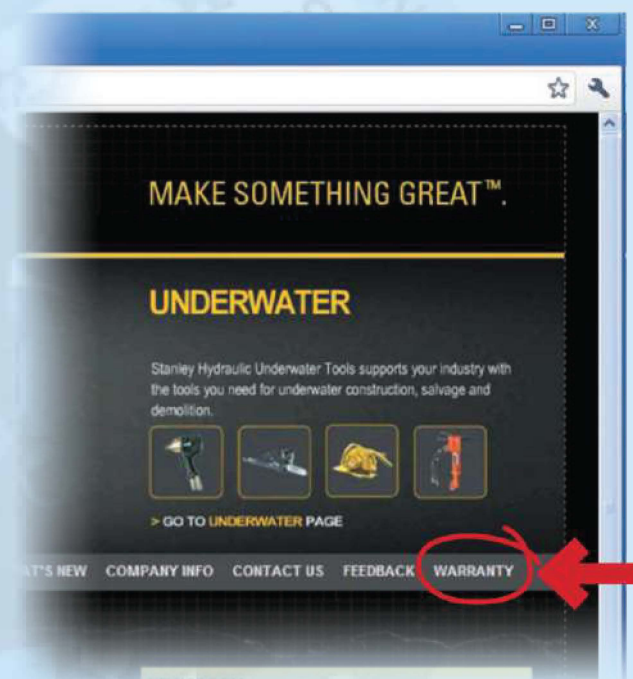
ACCESSORIES

03971	Flush-Face Coupling Set, 3/8" NPT
03974	Flush-Face Coupling Set, 1/2" NPT
06830	Hose Whip 18" long, -8 SAE x 1/2" NPT
03694	10" / 25.4 cm diameter, 1" arbor, diamond blade for concrete
04116	10" / 25.4 cm diameter, 1" arbor, abrasive blade for concrete
04117	10" / 25.4 cm diameter, 1" arbor, abrasive blade for aluminum and metal
31848	Dual Hose, 50' x 1/2", with couplers
31972	Dual Hose, 25' x 1/2", with couplers
58633	Twinned Hose, 25' x 1/2", with couplers
58634	Twinned Hose, 50' x 1/2", with couplers

When hydraulic hose exceeds 100' (30.4 m) in length, increase I.D. of both pressure and return hose. For more information, consult Stanley Hydraulic Tools.

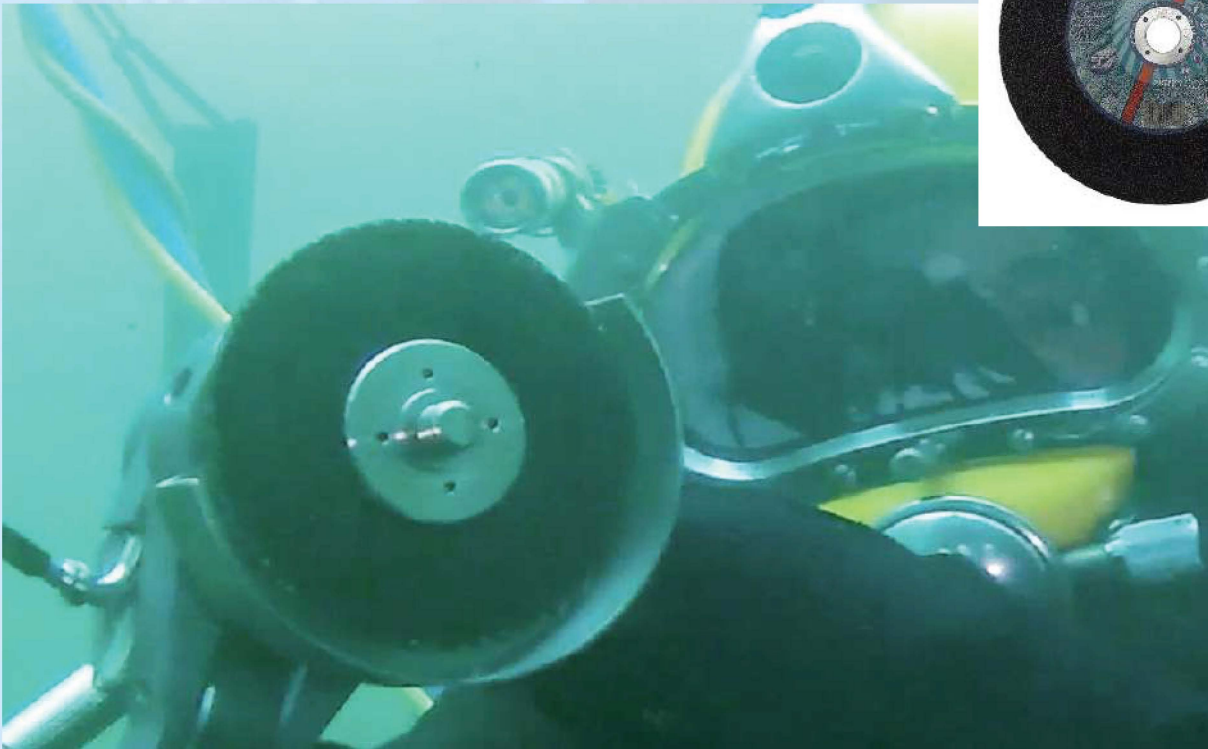
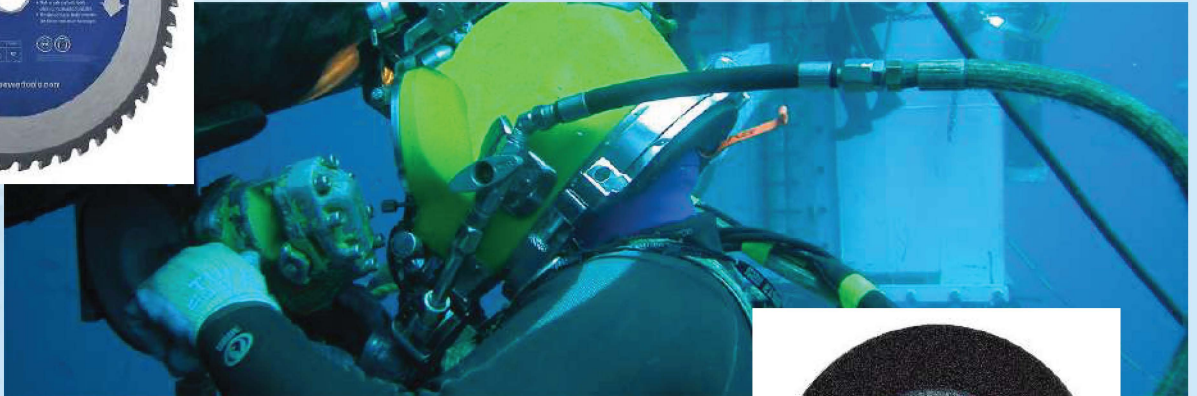
IMPORTANT

To fill out a Product Warranty Recording form and for information on your warranty visit stanleyhydraulic.com and select the Warranty tab.



Note: The warranty recording form must be submitted to validate the warranty.

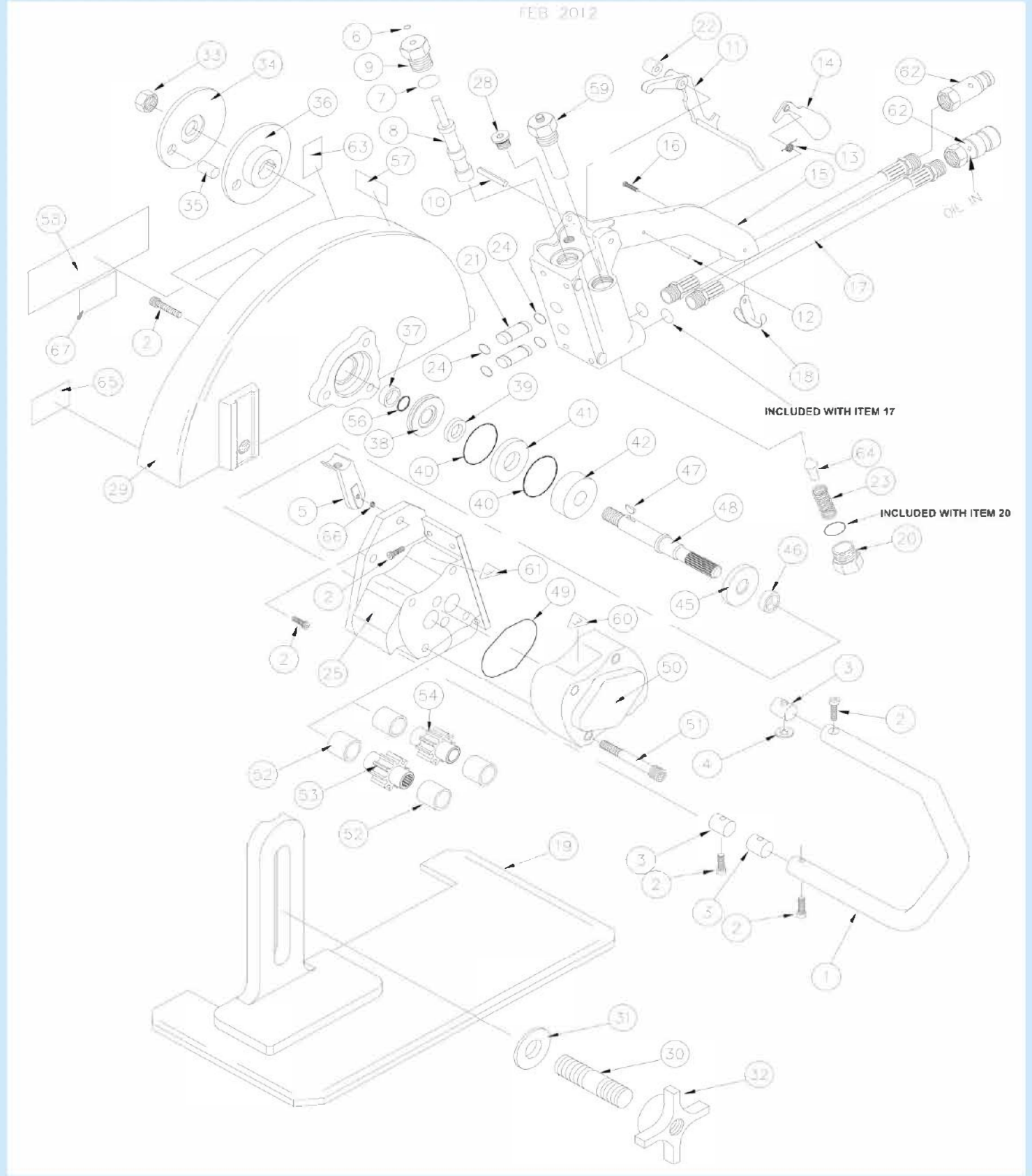
UNDERWATER HYDRAULIC CUT-OFFSAW SY - Co23341

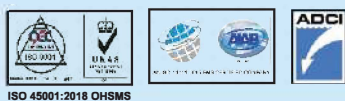


UNDERWATER HYDRAULIC CUT-OFFSAW SY - CO23341

<ul style="list-style-type: none"> • Description • Application • Materials • Part Number • Size • Max Rating 	<p>10" Diamond Segmented Cutting Disc</p> <p>Top Performance, very long life Cutting Concrete, Stone, Brick, Construction Materials DCB250-25 250mm x 3.0mm 6,150rpm (80 m/s)</p>	
<ul style="list-style-type: none"> • Description • Application • Materials • Part Number • Size • Max Rating 	<p>10" Tungsten Carbide Tipped (TCT) Cutting Disc 52T</p> <p>High performance, minimal vibration & long life Cutting Pipe, Structural, Solid and Plate Steel, Stainless steel TCT101S 250mm x 2.0mm x 52-Teeth 5,200rpm (68 m/s)</p>	
<ul style="list-style-type: none"> • Description • Application • Materials • Part Number • Size • Max Rating 	<p>10" Tungsten Carbide Tipped (TCT) Cutting Disc 40T</p> <p>High performance, minimal vibration & long life Wood cutting Wood TCT101WD x 40-Teeth 250mm x 2.0mm 5,200rpm (68 m/s)</p>	
<ul style="list-style-type: none"> • Description • Application • Materials • Part Number • Size • Max Rating 	<p>10" Bonded Abrasive Cutting Disc for Metal</p> <p>High performance, minimal vibration & long life Cutting Pipe, Structural, Solid and Plate Steel CW101FSP 250mm x 3.5mm 6,150rpm (80 m/s)</p>	
<ul style="list-style-type: none"> • Description • Application • Materials • Part Number • Size • Max Rating 	<p>10" Bonded Abrasive Cutting Disc for Stone</p> <p>High performance, minimal vibration & long life Cutting Masonry, Stone, Concrete Stone, Brick, Concrete, Ceramics CW101FMP 250mm DPC x 3.5mm 6,150rpm (80 m/s)</p>	

UNDERWATER HYDRAULIC CUT-OFFSAW SY - CO23341





UNDERWATER HYDRAULIC CUT-OFFSAW SY - CO23341

ITEM NO.	P/N	QTY.	DESCRIPTION
1	70980	1	HANDLE BAR
2	02764	11	CAPSCREW, 5/16-18 x 3/4 HEX SOC HD
3	02649	3	HANDLE BAR RETAINER
4	02643	1	NEOPRENE WASHER
5	20461	1	HANDLE STRUT
6	00112	1	QUAD-RING *
7	01604	1	O-RING, .097 x .755 (90 DURO) *
8	32026	1	VALVE SPOOL
9	02931	1	ON-OFF VALVE CAP
10	31804	1	ROLL PIN, 1/4 x 2 1/2
11	22707	1	TRIGGER
12	74841	1	ROLL PIN, 3/16 x 1 1/4
13	22701	1	TORSION SPRING
14	22704	1	SAFETY CATCH
15	28552	1	VALVE HANDLE ASSEMBLY (PURCHASE WITH P/N 74841)
16	00787	1	CAPSCREW, 1/4-20 x 1-1/4 FL HD
17	06830	2	HOSE ASSEMBLY
18	02911	1	HOSE CLIP
19	03806	1	SOLE PLATE ASSEMBLY
20	31137	1	PORT PLUG
21	00174	2	OIL TUBE
22	02920	1	SPACER
23	02916	1	SPRING
24	00175	4	O-RING, 1/2 x 5/8 x 1/6 *
25	35286	1	MOTOR HOUSING CCW
26	----	1	NO ITEM
27	----	1	NO ITEM
28	08104	1	PLUG SAE O-RING
29	04046	1	GRINDING WHEEL GUARD ASSEMBLY
30	03821	1	STUD
31	03827	1	WASHER, 1/2
32	03819	1	KNOB
33	01714	1	HEX NUT, 5/8-11 CCW
34	03802	1	OUTER FLANGE
35	03969	1	SPIROL PIN
36	03803	1	DRIVE FLANGE 1 IN.
37	03810	1	SEAL RACE
38	03811	1	SEAL CARRIER
39	03823	1	SEAL *
40	01262	2	O-RING, 1 3/4 x 1 7/8 x 1/16 *
41	03822	1	SEAL CARRIER WASHER

ITEM NO.	P/N	QTY.	DESCRIPTION
42	03109	1	BEARING
43	----	--	NO ITEM
44	----	--	NO ITEM
45	03812	1	SPACER WASHER
46	03824	1	SEAL *
47	00600	1	KEY
48	03813	1	MOTOR SHAFT CCW
49	00253	1	O-RING, 2 1/2 x 2 5/8 x 1/16 *
50	35285	1	MOTOR HOUSING CAP
51	01217	4	CAPSCREW, 3/8-16 x 2 1/2 HEX SOC HD
52	03826	4	BEARING (INCL WITH ITEM # 50 & 25)
53	03818	1	GEAR
54	04033	1	IDLER GEAR
55	00713	2	DOWEL PIN, 1/4 x 1
56	01211	1	O-RING, 5/8 x 3/4 x 1/16 *
57	74824	1	CO23 STICKER
58	74832	1	STANLEY LOGO DECAL
59	72879	1	FLOW CONTROL
60	12535	1	EHTMA "E" DECAL
61	12536	1	EHTMA "F" DECAL
62	03974	1	COUPLER SET (MALE & FEMALE) FOR INDIVIDUAL COUPLERS (P/N-03975 FEMALE / 03976 MALE)
63	28788	1	WARNING MANUAL STICKER
64	31186	1	POPPET
65	72881	1	WHEEL WARNING STICKER
66	01420	1	HELICOIL
67	72893	1	ROTATION DIRECTION STICKER

Note: Use Part Name and Part Number when ordering.

* Denotes Part in Seal Kit.

SEAL KIT DATA

P/N	QTY.	DESCRIPTION
SEAL KIT PART NO. 04120		
00175	4	O-RING
00253	1	O-RING
00112	1	QUAD-RING
01211	1	O-RING
01262	2	O-RING
01362	1	O-RING
01604	2	O-RING
03823	1	SEAL
03824	1	SEAL
01605	2	O-RING

SYNERGY INFRASTRUCTURE





SYNERGY

INNOVATIVE DIVING EQUIPMENT TRADING LLC

INSPIRING • ENGINEERING • INNOVATION

UAE • UK • INDIA • AZERBAIJAN



UNDERWATER HYDRAULIC CUT-OFFSAW SY - CO23341

Contact us

29th Street, Amman Road, Behind Al Huraiz Est. For Industry, Al Qusais, Industrial Area – 1, Dubai, United Arab Emirates

- Tel : 009714 2580533
- Fax : 009714 2580534
- UAE : 00971505648178
- UK : 00447951966260

- Website : www.synergiequipment.com
- Email : ram@synergiequipment.com
- For Sale : info@synergiequipment.com

